

2011 KARTA research project

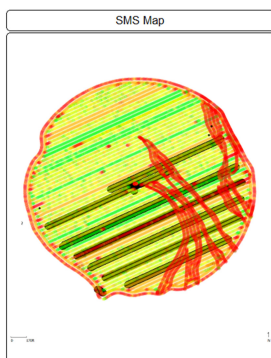
Cover Crop Termination Project

Thank you for the grant

Method

- A wheat cover crop was terminated using 2 different chemicals.
- On April 21st ½ lb. of 9-0, 3oz rifle, 4oz salvo, ams, & liberate were applied used 10gal / acre
- With 37.33 oz of Glyphos plus **or** 6 oz of Intensity II (select max)
- Roundup Ready Corn was planted on May 3rd

Black strips are where Intensity was sprayed
The red is replant because of flooding



May 3rd



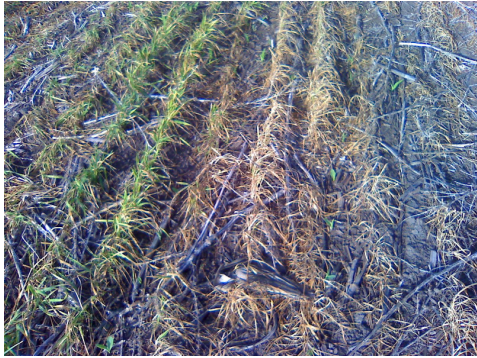
As planting May 3rd
The green is the Intensity strip



May 12th



May 12th

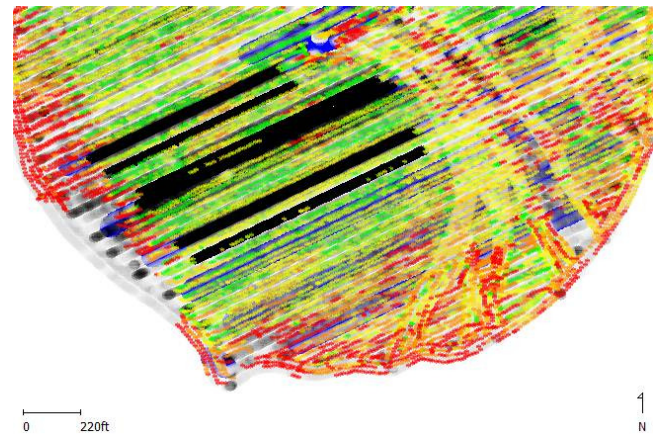


June 22 flood



To determent the yield

- The field was harvested with the original planting rows.
- I used Agleader SMS. I selected side by side polygons in areas of none replant



Yields

Intensity	Roundup	Difference		
143.16	153.06	9.9		
137.56	149.12	11.56		
162.24	165.44	3.2		
153.00	160.74	7.74		
79.4	85.63	6.23		
93.74	99.24	5.5		
147.2	145.57	-1.63		
	Avg. Diff	6.07		

In conclusion

- In this trail the wheat killed with roundup out yield the wheat killed with Select Max

Questions I have form this test

- Was this test accurate?
- If the Select had more days to kill the wheat before planting?
- Would non GMO corn have the same outcome?
- Should you test populations within the test?
(if your swaths are not an even match 90ft & 40ft)