

Ramsey Farms of Scott City Scott County, Kansas

Follow us on Facebook
And
Twitter: @Ramsey_Farms



Ascend Wheat Study

2015-2016

4 oz Ascend/cwt.

Seed applied

Details

- Planted 10-7-2015
- Harvested 6-23-16
- Byrd Certified seed at 60 lbs/ac
- Ascend blended @ 4oz./cwt seed
- Drilled with 40 foot Great Plains double disc Air Seeder
- Treated strips 120 feet wide
- Untreated strips 120 feet wide
- No till summer fallow 2015
- Milo 2014

- 75 lbs/ac 40 Rock with air seeder at planting (9N, 30P, 5S, .75Z)
- Warden Cereals applied to seed @ 3 oz/bu
- 39 lbs/ac N top dress as 28% UAN with 4 oz/ac

Rave on 3-9-16

- Harvested with 32' Shelbourne Stripper
- Cut off headlands then harvested strips same direction as planted
- Ascend cost \$4.51/ac

Moisture Information

Month	Precip	Total
September	1.13"	1.13"
October	2.39"	3.52"
November	1.40"	4.92"
December	0.72"	5.64"
January	0.22"	5.86"
February	0.53"	6.39"
March	0.25"	6.64"
April	5.65"	12.29"
May	1.82"	14.11"
June	1.22" To Harvest	15.33"

ASCEND[®]

PLANT GROWTH REGULATOR

*Hormone compounds to stimulate plant growth.
Concentrations based on biological activity.*

ACTIVE INGREDIENTS

*Cytokinin, as Kinetin	0.090%
*Gibberellic Acid	0.030%
*Indole Butyric Acid	0.045%

OTHER INGREDIENTS	99.835%
TOTAL	100.000%

*Contains 0.03 oz. cytokinins/qt.

*Contains 0.015 oz. indole butyric acid/qt.

*Contains 0.01 oz. gibberellic acid/qt.

KEEP OUT OF REACH OF CHILDREN

CAUTION

FIRST AID	
If in eyes	<ul style="list-style-type: none">• Hold eye open and rinse slowly and gently with water for 15-20 minutes.• Remove contact lenses, if present, after the first 5 minutes, then continue rinsing eye.• Call a poison control center or doctor for treatment advice.
If on skin or clothing	<ul style="list-style-type: none">• Take off contaminated clothing.• Rinse skin immediately with plenty of water for 15-20 minutes.• Call a poison control center or doctor for treatment advice.
Have the product container or label with you when calling a poison control center or doctor, or going for treatment. HOTLINE NUMBER: In case of medical emergency call 1-877-424-7452.	

Read additional precautionary statements found inside booklet.

SHAKE WELL BEFORE USING.

EPA Reg. No. 9779-335

EPA Est. No. 63603-KS-1
NET CONTENTS: 1 Gal.

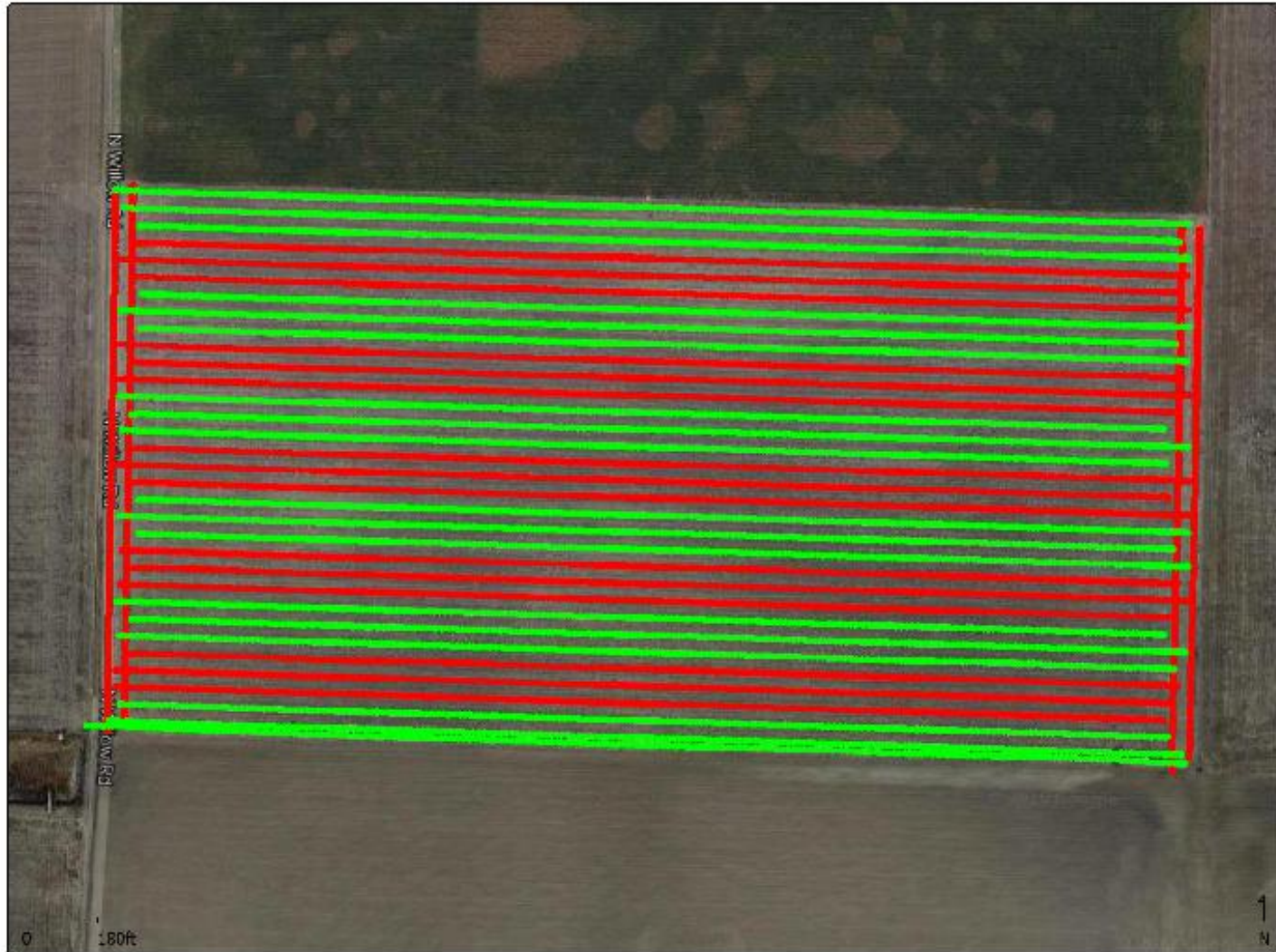
Distributed by:
WINFIELD SOLUTIONS, LLC,
P.O. Box 64589, St. Paul, MN 55164

1/0805/3
Lot No.

WINFIELD

AgriSOLUTIONS
TM

Planting



11-12-15



4 12 16



6-20-16



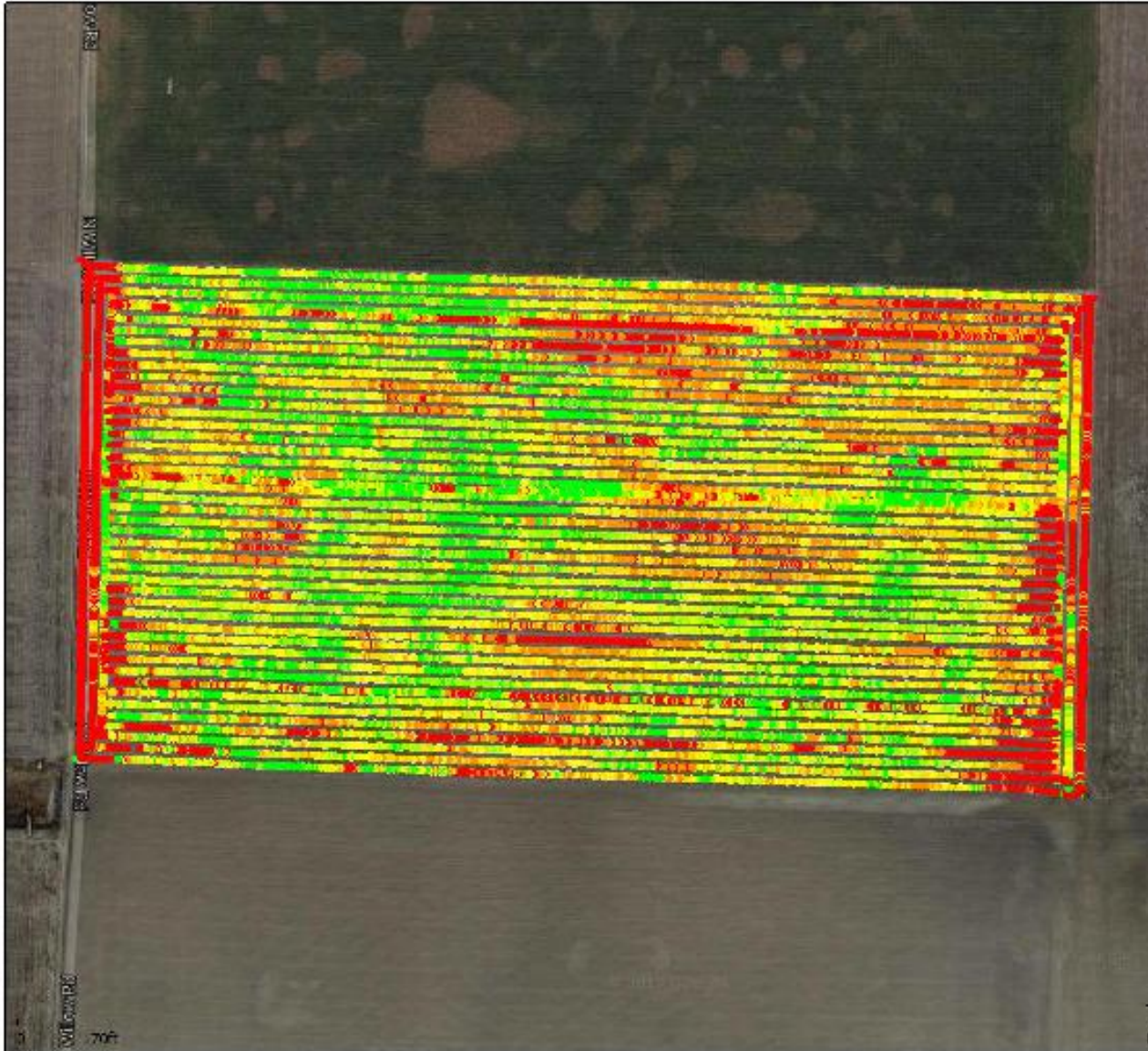
6 20 16



6-23-16



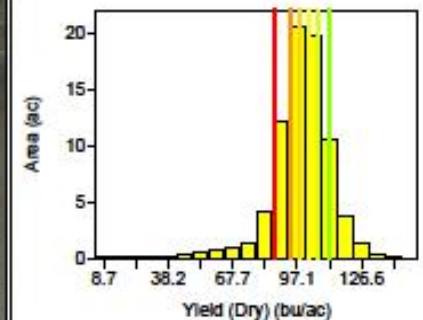
Grain Harvest 2016 - NW1 S/2(Wheat)



Grower : Ramsey Farms
 Farm : Ramsey
 Field : NW1 S/2
 Year : 2016
 Operation : Grain Harvest
 Crop / Product : Wheat
 Op. Instance : Harvest - 1
 Area : 78.62 ac
 Avg. Yield : 100.20 bu/ac
 Avg. Moisture : 12.71 %

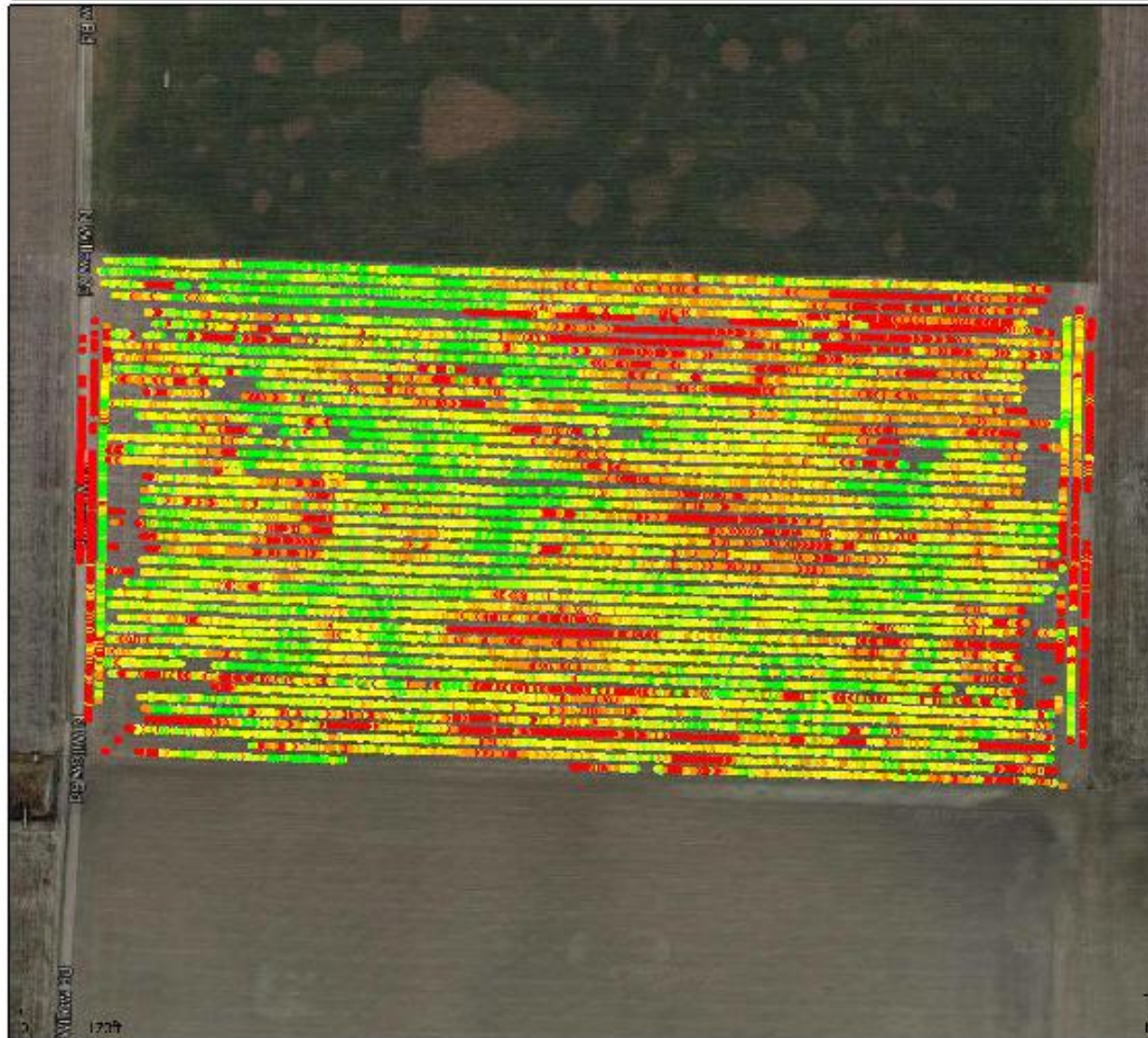
Yield (Dry) (bu/ac)

111.67	-	296.45 (10.33 ac)
106.22	-	111.67 (11.02 ac)
102.08	-	106.22 (11.27 ac)
98.10	-	102.08 (11.52 ac)
93.80	-	98.10 (11.80 ac)
87.25	-	93.80 (11.96 ac)
5.05	-	87.25 (10.71 ac)



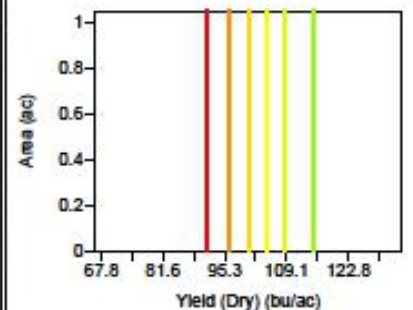
Clean Yield

Grain Harvest 2016 - NW1 S/2(Wheat)

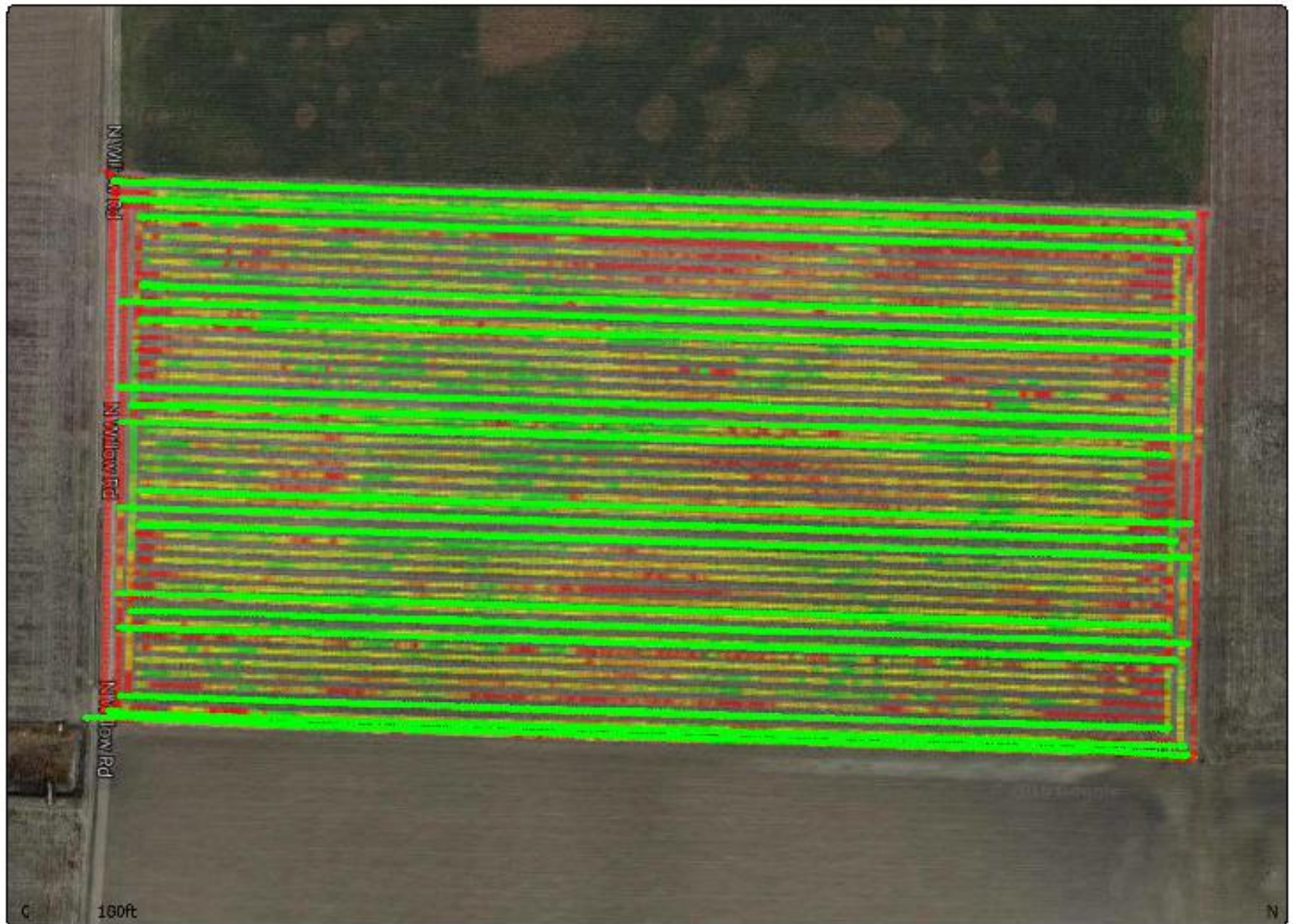


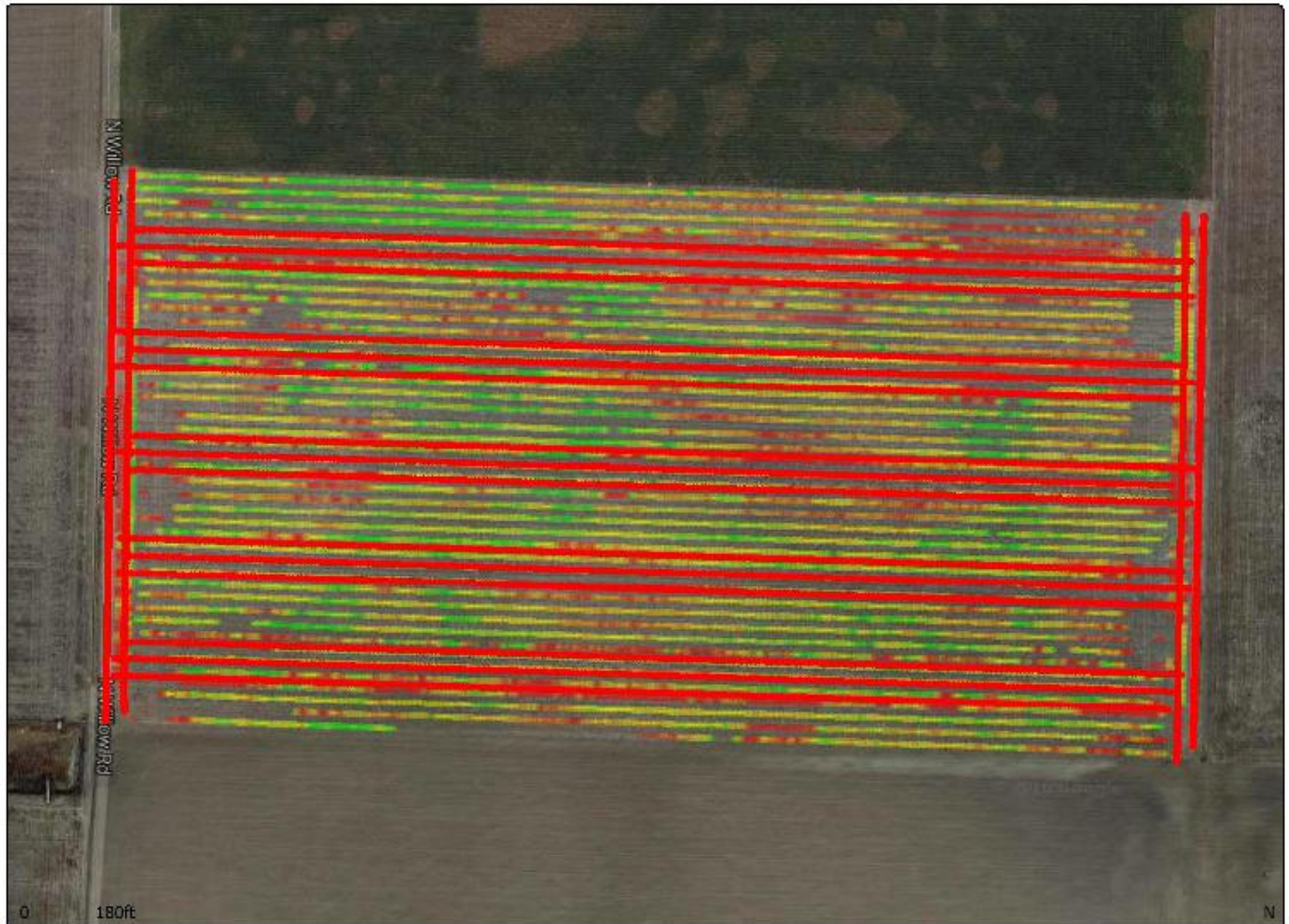
Grower : Ramsey Farms
Farm : Ramsey
Field : NW1 S/2
Year : 2016
Operation : Grain Harvest
Crop / Product : Wheat
Op. Instance : Harvest - 1
Area : 0.00 ac
Avg. Yield : 101.96 bu/ac

Yield (Dry) (bu/ac)		
115.26 - 157.60	(0.00 ac)	
108.80 - 115.26	(0.00 ac)	
104.63 - 108.80	(0.00 ac)	
100.63 - 104.63	(0.00 ac)	
96.51 - 100.63	(0.00 ac)	
91.33 - 96.51	(0.00 ac)	
66.11 - 91.33	(0.00 ac)	



Ascend over Harvest





Weighed Strips

Ramsey Farms Ascend On Wheat Trial

Planting Date: October 7

Harvest Date: June 23 / July 7

Seed Variety: Byrd

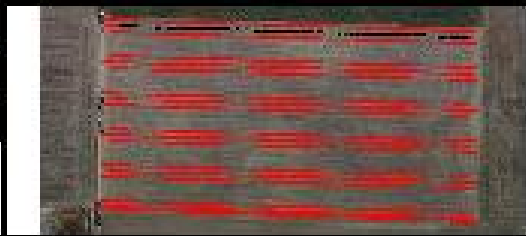
Population: 60 lbs/acre

Spacing: 7.5"

Trial	Weight	Combine	Moisture	Area	Yield	Com. Yld
N Cam 10900	10900	11064	12.63	1.691	107.4	109.0
N Cam 11080	11080	10868	13.09	1.665	110.9	108.8
S Cam 10680	10680	10681	13.25	1.67	106.6	106.6
S Cam 10700	10700	10789	13.42	1.696	105.1	106.0

	Cart Wt.	Combine	
Ascend	107.0	107.8	-0.8
Check	106.1	106.3	-0.2
	0.9	1.5	

Query Results

Query 1				
Layer 1 - BYRD + ASCEND Wheat - Wheat				
Main Layer				
Total area	2.209 ac			
Length	2,364.1 ft			
Count	732			
				
Description	Average	Total	Minimum	Maximum
Elevation	2,697.1 ft		2,695.0 ft	2,698.5 ft
Date Created	10/7/2015 10:00:47 AM		10/7/2015 10:00:47 AM	10/7/2015 10:00:47 AM
Description	Value	Area	Length	Count
Dataset - Name	BYRD + ASCEND	2.209 ac	2,364.1 ft	732
Pass Number	2	2.209 ac	2,364.1 ft	732
Layer 2 - NW1S Ascend clean yield data.csv				
Main Layer				
Total area	0.00 ac			
Length	0.00 ft			
Count	772			
Description	Average	Total	Minimum	Maximum
Yield (Dry)	102.61 bu/ac	0.00 bu	69.53 bu/ac	129.93 bu/ac

Query Results

Query 1

Layer 1 - BYRD | Wheat - Wheat | 2015

Main Layer

Total area 2.170 ac
Length 2,322.2 ft
Count 692



Description	Average	Total	Minimum	Maximum
Elevation	2,696.8 ft		2,695.2 ft	2,699.0 ft
Date Created	10/7/2015 4:20:42 PM		10/7/2015 4:20:42 PM	10/7/2015 4:20:42 PM

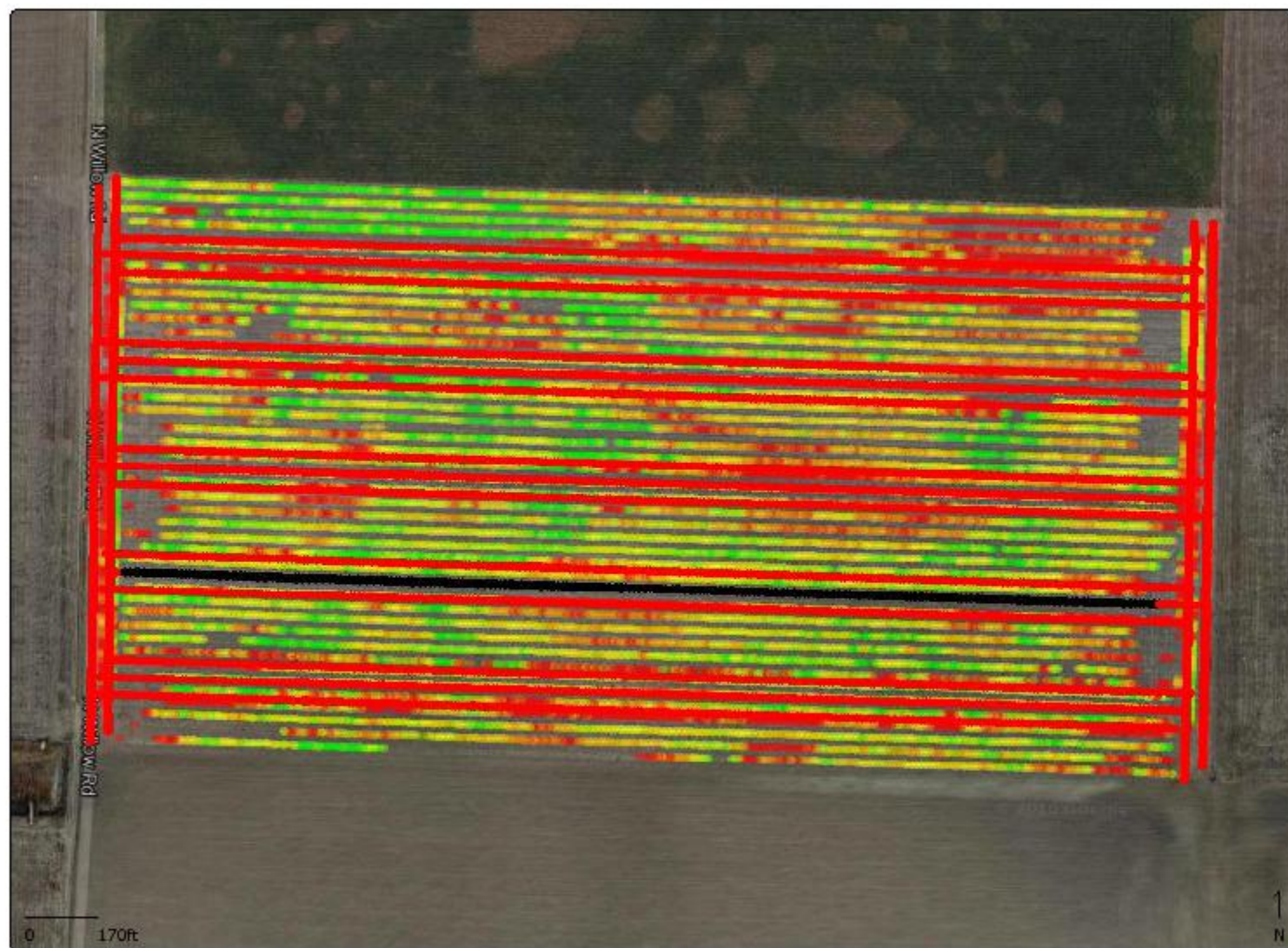
Description	Value	Area	Length	Count
Dataset - Name	BYRD	2.170 ac	2,322.2 ft	692
Pass Number	2	2.170 ac	2,322.2 ft	692

Layer 3 - NW1S Ascend clean yield data.csv

Main Layer

Total area 0.00 ac
Length 0.00 ft
Count 314

Description	Average	Total	Minimum	Maximum
Yield (Dry)	95.71 bu/ac	0.00 bu	78.17 bu/ac	125.98 bu/ac



Ramsey Ascend on wheat 2016

Norht to South		30 feet wide harvest strips	
	Ascend Yield	Non-Ascend Yield	
Ascend	102.61		
Non Ascend		95.71	
Ascend	98.72		
Non Ascend		104.25	
Ascend	105.91		
Non Ascend		102.65	
Ascend	107.45		
Non Ascend		103.39	
Ascend	102.67		
Non Ascend		103.4	
Avg.	103.472	101.88	1.592

t-Test: Paired Two Sample for Means

	<i>Ascend</i>	<i>Non-Ascend</i>
Mean	103.472	101.88
Variance	11.43402	12.2173
Observations	5	5
Pearson Correlation	0.01525699	
Hypothesized Mean Difference	0	
df	4	
t Stat	0.737627458	
P(T<=t) one-tail	0.250835809	
t Critical one-tail	2.131846782	
P(T<=t) two-tail	0.501671618	
t Critical two-tail	2.776445105	

Ramsey Ascend on wheat 2016

North to South 30 feet wide harvest strips

Pairs	Ascend	Non-Ascend	Difference	
A	102.61	95.71		6.9
B	98.72	104.25		-5.53
C	105.91	102.65		3.26
D	107.45	103.39		4.06
E	102.67	103.4		-0.73
	Avg.	103.472	101.88	1.592

Mean difference 1.592

Stand Dev. Of Difference 4.826